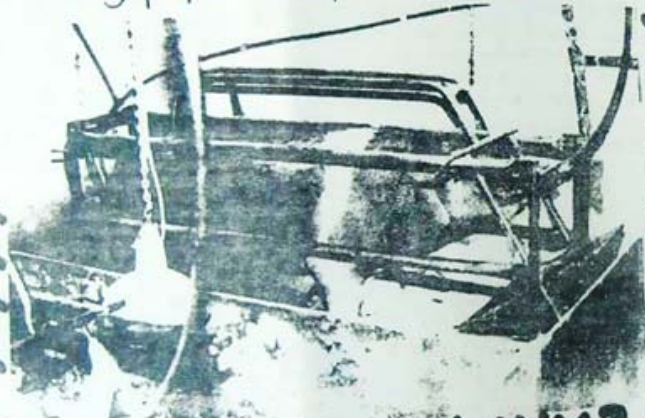


REAL farmers care about their stock and would no more dream of keeping hapless animals out in the cold and the damp than they would consider sleeping rough themselves. So they pamper them in snug purpose-built premises complete with



room service and mains drainage **WHY?** where they can live happily together. Not that REAL farmers are sentimental. They know that no man can truly care for anything in which he does not have a direct financial interest. On REAL FARMS all is peace. Nothing moves except the odd gaily painted machine.

PARTY DAY

We went to Barnsley to meet Party Day and set off with a tape recorder to do an interview. Unfortunately the location for the said interview was the British Home Stores' cafe in Barnsley, and the quality of the tape was less than desired. Salvaging what we could we compiled together the bulk of the interview and we hope this will suffice. Apologies to Party for any inconvenience caused.

Party Day are a band who do not fit into a category—that is to say, they prefer to invent their own. Their music is varied but not so varied that it doesn't appeal to anybody. They think the main reason why they've not attracted a big record deal is because all the major companies are not prepared to take risks with small, unknown bands. Party Day have released up to date, a double A sided single: Row the Boat Ashore/Poison, and a demo cassette—Sans Culottes. They were disappointed with the cassette and now think that it is a waste of time releasing cassettes as "nobody takes any notice of them". Future projects include an E.P. (by a Belgium company — "Play It Again Sam", this will probably include Northern bands and also feature March Violets; a compilation L.P.; and a video (which will probably be available around Christmas).

The band are divided on a few issues, Martin wants to exp and the group but Carl and Mick think that the band is OK as it is. I think what Martin wanted to do was have an extra person for live work but not a permanent member. Party Day have a good following in their home town of Barnsley and the neighbouring city of Leeds. However, they don't seem to create much interest in Sheffield. We asked them why they thought this was the case, this is what they said, "They don't like us, nobody likes us". This comment ended a brief and interesting interview. Apologies once again for not being able to include the whole of the conversation, however we hope we've captured the essence of it here.

Party Day are:
Carl: Vocals and bass.
Martin: Guitar
Mick: Drums

Contact them at:
313, Hough Lane,
Wombwell.
Nr., Barnsley